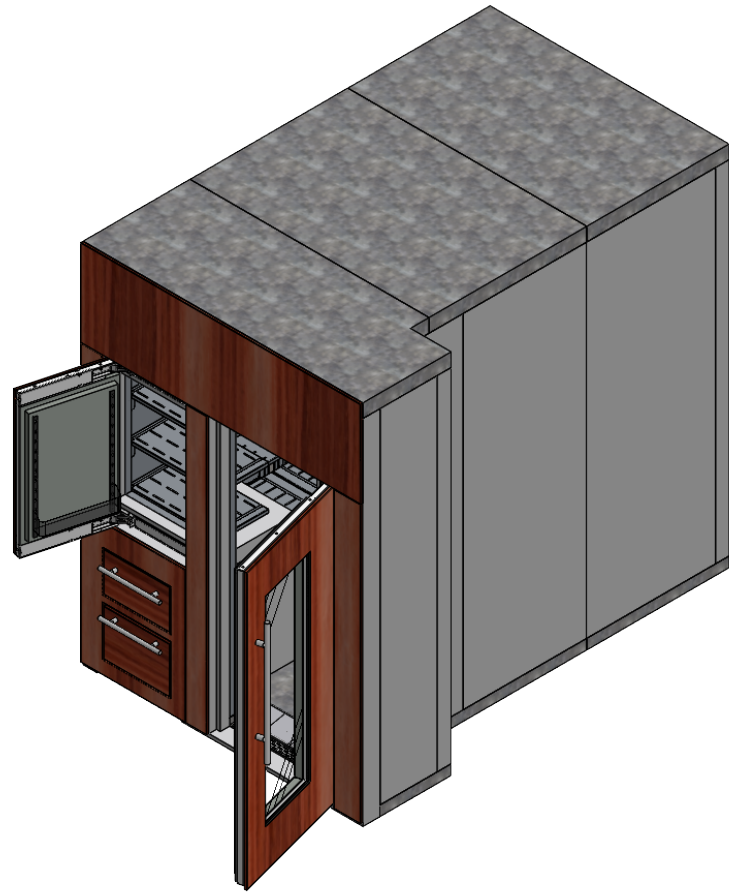


OVERLAY PANELS
REFERENCE ONLY



ISO VIEW

DISCLAIMER:

OVERLAY PANELS ARE FOR CONCEPT ONLY
AND ARE NOT INCLUDED. DIMENSIONS ARE REFERENCE
ONLY AND MAY CHANGE WHEN COOLER INSTALLATION IS
COMPLETE



28310 Ave Crocker UNIT C,
VALENCIA, CA 91355
PHONE: 661-505-7913
WEB SITE: <https://qoldfusion.com>



PROJECT: MAGNIFICA RESIDENCE, WALK-IN
LOCATION: FLORIDA
ADDRESS: TBD
DATE: 9/27/2024
REV.: A

PART NAME:

01-MAGNIFICA_WALK-IN-COLD-PANTRY_ASSY_A

ASSEMBLY:

MAGNIFICA_WALK-IN-COLD-PANTRY_ASSY_A_PACIFIC

DO NOT SCALE DRAWING	UNLESS OTHERWISE SPECIFIED:
SHEET: 1 OF 8	DIMENSIONS ARE IN INCHES
SCALE: 1:40	TOLERANCES:
SHEET SIZE: A	FRACTIONAL \pm 1/32"
DRAWN BY: J.Hamilton	TWO PLACE DECIMAL \pm .02"
STATUS: In Design	THREE PLACE DECIMAL \pm .005"

APPROVED BY:

SIGNATURE:

ATTENTION!

THIS SET OF COLD STORAGE ROOM SHOP DRAWINGS ARE
PRELIMINARY ONLY AND BEING SUBMITTED FOR APPROVAL
PRIOR TO AVAILABLE SITE DIMENSIONS. ALL FINAL
DIMENSIONS CONFORMING TO SPECIFIC SITE CONDITIONS
AND/OR THE INTERIOR MODULAR SHELVING UNIT SPACE
SHALL BE ESTABLISHED PRIOR TO ANY FABRICATION.

PROPRIETARY AND CONFIDENTIAL

THIS PRINT IS THE PROPERTY OF QOLDFUSION INC.,
AND IT EMBODIES A PROPRIETARY DESIGN WHICH SHALL NOT
BE DISCLOSED, USED, OR DUPLICATED FOR PROCUREMENT OR
MANUFACTURING PURPOSES UNLESS SPECIFIC WRITTEN
AUTHORIZATION BY QOLDFUSION INC. IS GIVEN. THIS PRINT
IS LOANED, AND SUBJECT TO RETURN UPON DEMAND.



FRONT VIEW
WITH OVERLAY PANELS

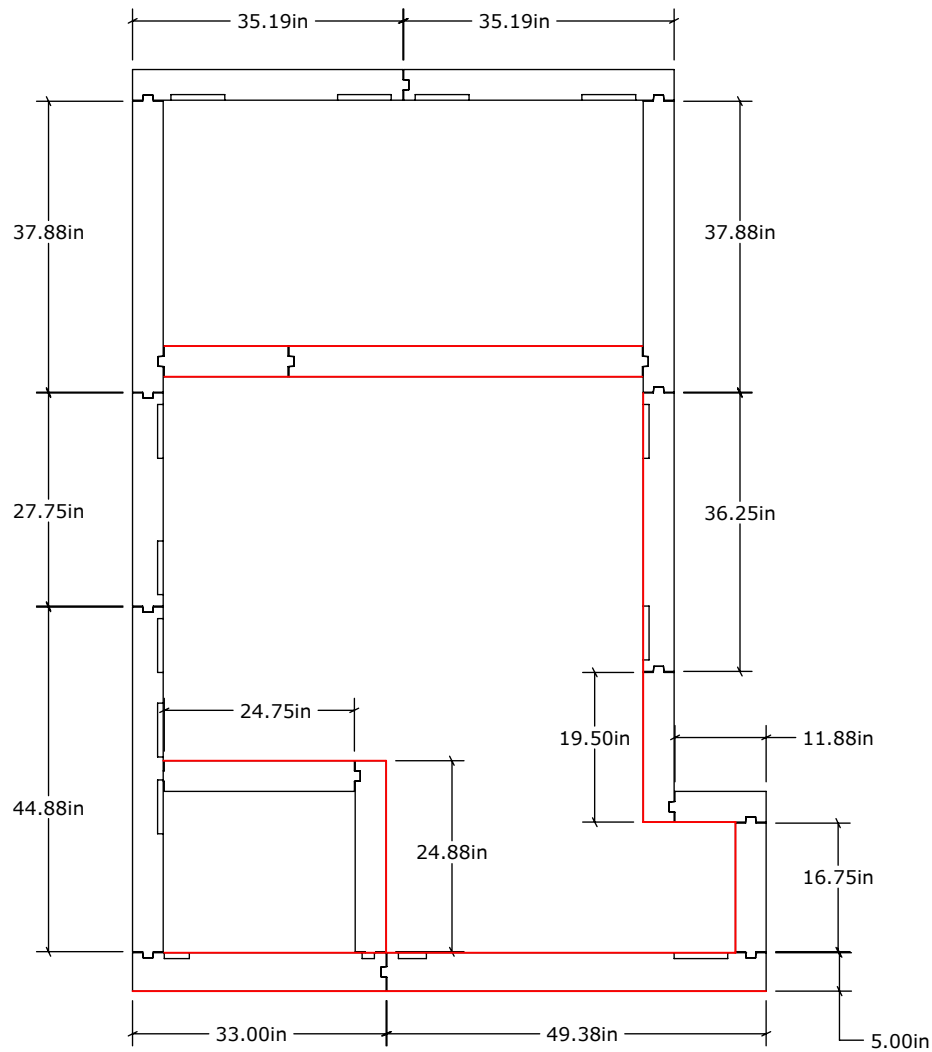


STAND ALONE FREEZER
(REFERENCE ONLY)

FRONT VIEW
WITH OVERLAY PANELS

DISCLAIMER:
OVERLAY PANELS ARE FOR CONCEPT ONLY
AND ARE NOT INCLUDED. DIMENSIONS ARE REFERENCE
ONLY AND MAY CHANGE WHEN COOLER INSTALLATION IS
COMPLETE

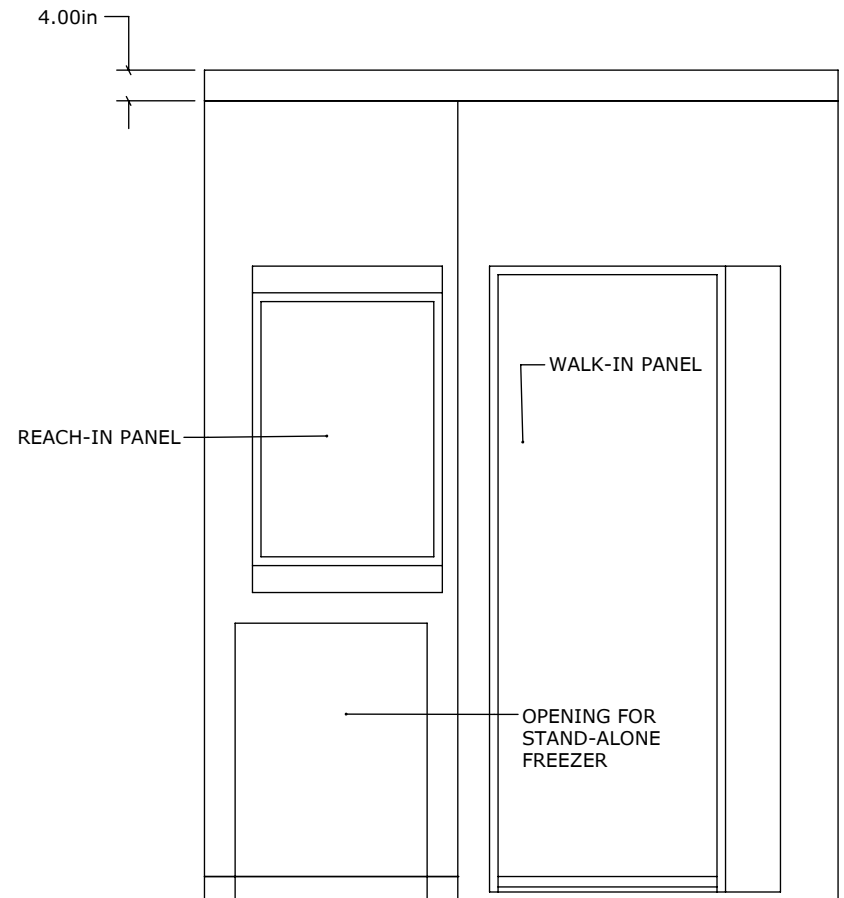
<div><div><div><div><div><div></div><div>QOLDFUSION™</div><div>MAKE ROOM FOR COOL</div></div></div><div><div><div><div><div></div><div></div><div></div></div><div><div></div><div></div></div></div><div><div><div>28310 Ave Crocker UNIT C, VALENCIA, CA 91355 PHONE: 661-505-7913 WEB SITE: https://qoldfusion.com</div></div></div></div></div></div></div></div>	PART NAME: 01-MAGNIFICA_WALK-IN-COLD-PANTRY_ASSY_A		APPROVED BY:	
	ASSEMBLY: MAGNIFICA_WALK-IN-COLD-PANTRY_ASSY_A_PACIFIC		SIGNATURE:	
	DO NOT SCALE DRAWING	UNLESS OTHERWISE SPECIFIED:	ATTENTION!	PROPRIETARY AND CONFIDENTIAL
	SHEET: 2 OF 8	DIMENSIONS ARE IN INCHES	THIS SET OF COLD STORAGE ROOM SHOP DRAWINGS ARE PRELIMINARY ONLY AND BEING SUBMITTED FOR APPROVAL PRIOR TO AVAILABLE SITE DIMENSIONS. ALL FINAL DIMENSIONS CONFORMING TO SPECIFIC SITE CONDITIONS AND/OR THE INTERIOR MODULAR SHELVING UNIT SPACE SHALL BE ESTABLISHED PRIOR TO ANY FABRICATION.	
PROJECT: MAGNIFICA RESIDENCE, WALK-IN	SCALE: 1:30	TOLERANCES:		
LOCATION: FLORIDA	SHEET SIZE: A	FRACTIONAL ± 1/32"		
ADDRESS: TBD	DRAWN BY: J.Hamilton	TWO PLACE DECIMAL ± .02"		
DATE: 9/27/2024	STATUS: In Design	THREE PLACE DECIMAL ± .005"	THIS PRINT IS THE PROPERTY OF QOLDFUSION INC., AND IT EMBODIES A PROPRIETARY DESIGN WHICH SHALL NOT BE DISCLOSED, USED, OR DUPLICATED FOR PROCUREMENT OR MANUFACTURING PURPOSES UNLESS SPECIFIC WRITTEN AUTHORIZATION BY QOLDFUSION INC. IS GIVEN. THIS PRINT IS LOANED, AND SUBJECT TO RETURN UPON DEMAND.	
REV.: A				



TOP VIEW

NOTES:

- 1) PANEL DIMENSIONS INCLUDE .125" GAP BETWEEN PANELS
- 2) EXTERIOR WALL PANELS x14, 101in TALL
- 3) INTERIOR WALL PANELS x2, 33.00in TALL
- 4) RED INDICATES STAINLESS STEEL SKINS



FRONT VIEW



28310 Ave Crocker UNIT C,
VALENCIA, CA 91355
PHONE: 661-505-7913
WEB SITE: <https://qoldfusion.com>



PROJECT: MAGNIFICA RESIDENCE, WALK-IN
LOCATION: FLORIDA
ADDRESS: TBD
DATE: 9/27/2024
REV.: A

PART NAME:
01-MAGNIFICA_WALK-IN-COLD-PANTRY_ASSY_A

ASSEMBLY:
MAGNIFICA_WALK-IN-COLD-PANTRY_ASSY_A_PACIFIC

DO NOT SCALE DRAWING	UNLESS OTHERWISE SPECIFIED:
SHEET: 3 OF 8	DIMENSIONS ARE IN INCHES
SCALE: 1:25	TOLERANCES:
SHEET SIZE: A	FRACTIONAL ± 1/32"
DRAWN BY: J.Hamilton	TWO PLACE DECIMAL ± .02"
STATUS: In Design	THREE PLACE DECIMAL ± .005"

APPROVED BY:

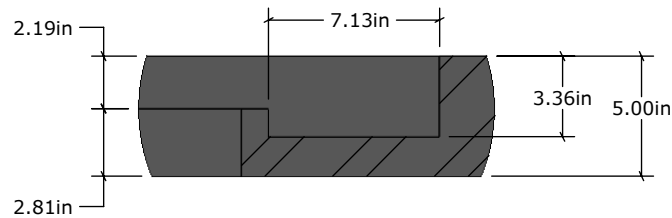
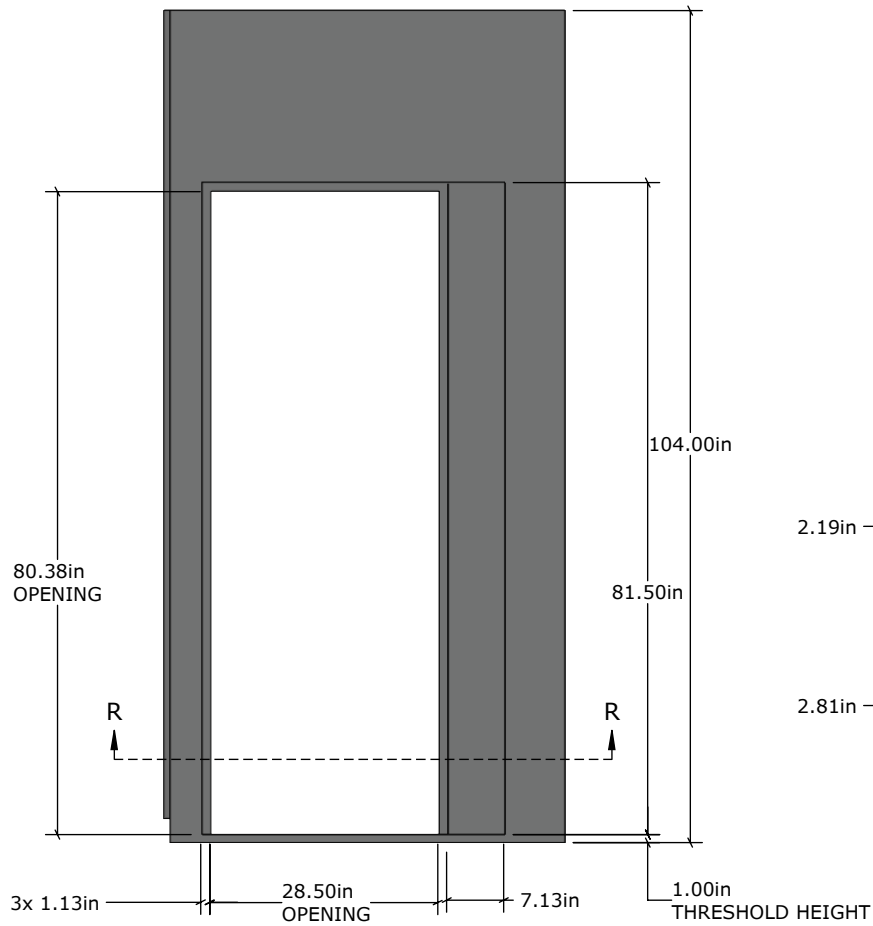
SIGNATURE:

ATTENTION!

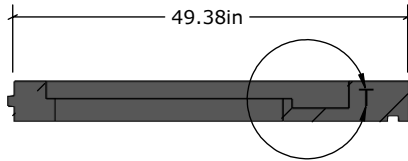
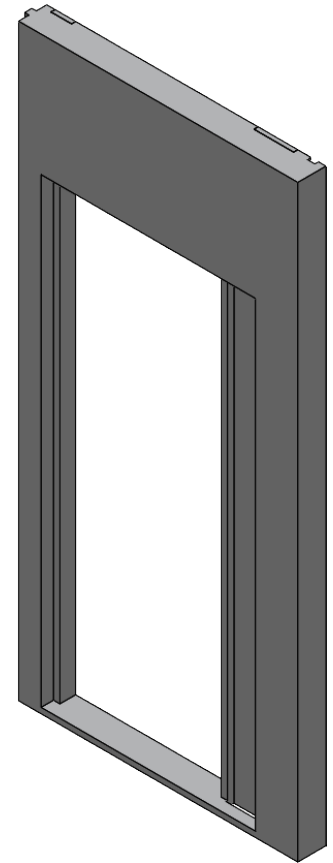
PROPRIETARY AND CONFIDENTIAL

THIS SET OF COLD STORAGE ROOM SHOP DRAWINGS ARE PRELIMINARY ONLY AND BEING SUBMITTED FOR APPROVAL PRIOR TO AVAILABLE SITE DIMENSIONS. ALL FINAL DIMENSIONS CONFORMING TO SPECIFIC SITE CONDITIONS AND/OR THE INTERIOR MODULAR SHELVING UNIT SPACE SHALL BE ESTABLISHED PRIOR TO ANY FABRICATION.

THIS PRINT IS THE PROPERTY OF QOLDFUSION INC., AND IT EMBODIES A PROPRIETARY DESIGN WHICH SHALL NOT BE DISCLOSED, USED, OR DUPLICATED FOR PROCUREMENT OR MANUFACTURING PURPOSES UNLESS SPECIFIC WRITTEN AUTHORIZATION BY QOLDFUSION INC. IS GIVEN. THIS PRINT IS LOANED, AND SUBJECT TO RETURN UPON DEMAND.



DETAIL T
SCALE 1 : 8



SECTION R-R

WALK-IN DOOR PANEL



28310 Ave Crocker UNIT C,
VALENCIA, CA 91355
PHONE: 661-505-7913
WEB SITE: <https://qoldfusion.com>



PROJECT: MAGNIFICA RESIDENCE, WALK-IN
LOCATION: FLORIDA
ADDRESS: TBD
DATE: 9/27/2024
REV.: A

PART NAME:
MAGNIFICA_WALK-IN-DOOR-FRAME-PANEL

ASSEMBLY:
MAGNIFICA_WALK-IN-COLD-PANTRY_ASSY_A_PACIFIC

DO NOT SCALE DRAWING	UNLESS OTHERWISE SPECIFIED:
SHEET: 4 OF 8	DIMENSIONS ARE IN INCHES
SCALE: 1:24	TOLERANCES:
SHEET SIZE: A	FRACTIONAL \pm 1/32"
DRAWN BY: J.Hamilton	TWO PLACE DECIMAL \pm .02"
STATUS: In Design	THREE PLACE DECIMAL \pm .005"

APPROVED BY:

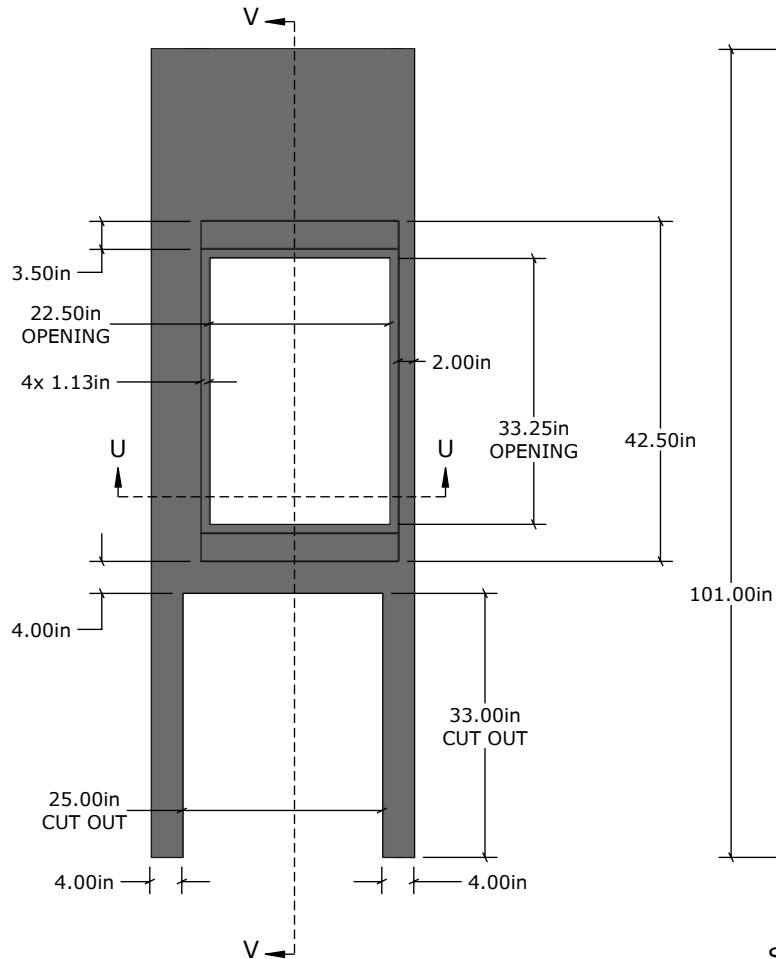
SIGNATURE:

ATTENTION!

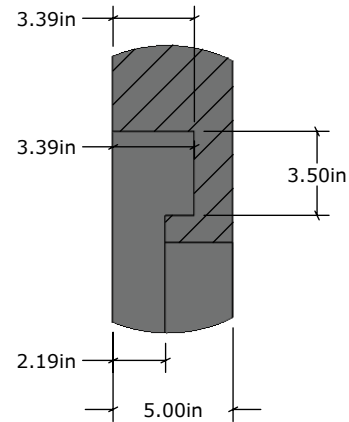
PROPRIETARY AND CONFIDENTIAL

THIS SET OF COLD STORAGE ROOM SHOP DRAWINGS ARE PRELIMINARY ONLY AND BEING SUBMITTED FOR APPROVAL PRIOR TO AVAILABLE SITE DIMENSIONS. ALL FINAL DIMENSIONS CONFORMING TO SPECIFIC SITE CONDITIONS AND/OR THE INTERIOR MODULAR SHELVING UNIT SPACE SHALL BE ESTABLISHED PRIOR TO ANY FABRICATION.

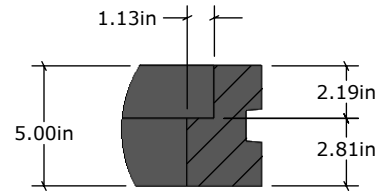
THIS PRINT IS THE PROPERTY OF QOLDFUSION INC., AND IT EMBODIES A PROPRIETARY DESIGN WHICH SHALL NOT BE DISCLOSED, USED, OR DUPLICATED FOR PROCUREMENT OR MANUFACTURING PURPOSES UNLESS SPECIFIC WRITTEN AUTHORIZATION BY QOLDFUSION INC. IS GIVEN. THIS PRINT IS LOANED, AND SUBJECT TO RETURN UPON DEMAND.



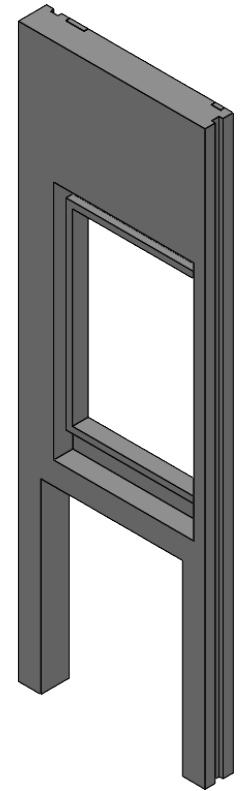
SECTION V-V



DETAIL W
SCALE 1 : 8



DETAIL Y
SCALE 1 : 8



REACH-IN DOOR PANEL



28310 Ave Crocker UNIT C,
VALENCIA, CA 91355
PHONE: 661-505-7913
WEB SITE: <https://qoldfusion.com>



PROJECT: MAGNIFICA RESIDENCE, WALK-IN
LOCATION: FLORIDA
ADDRESS: TBD
DATE: 9/27/2024
REV.: A

PART NAME:
MAGNIFICA_REACH-IN-DOOR-PANEL-22IN

ASSEMBLY:
MAGNIFICA_WALK-IN-COLD-PANTRY_ASSY_A_PACIFIC

DO NOT SCALE DRAWING	UNLESS OTHERWISE SPECIFIED:
SHEET: 5 OF 8	DIMENSIONS ARE IN INCHES
SCALE: 1:24	TOLERANCES:
SHEET SIZE: A	FRACTIONAL \pm 1/32"
DRAWN BY: J.Hamilton	TWO PLACE DECIMAL \pm .02"
STATUS: In Design	THREE PLACE DECIMAL \pm .005"

APPROVED BY:

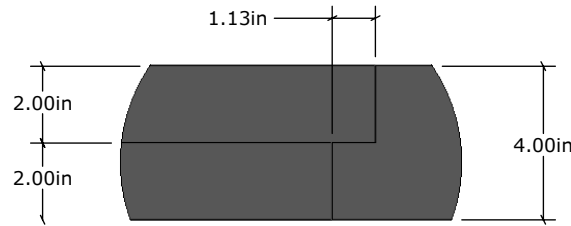
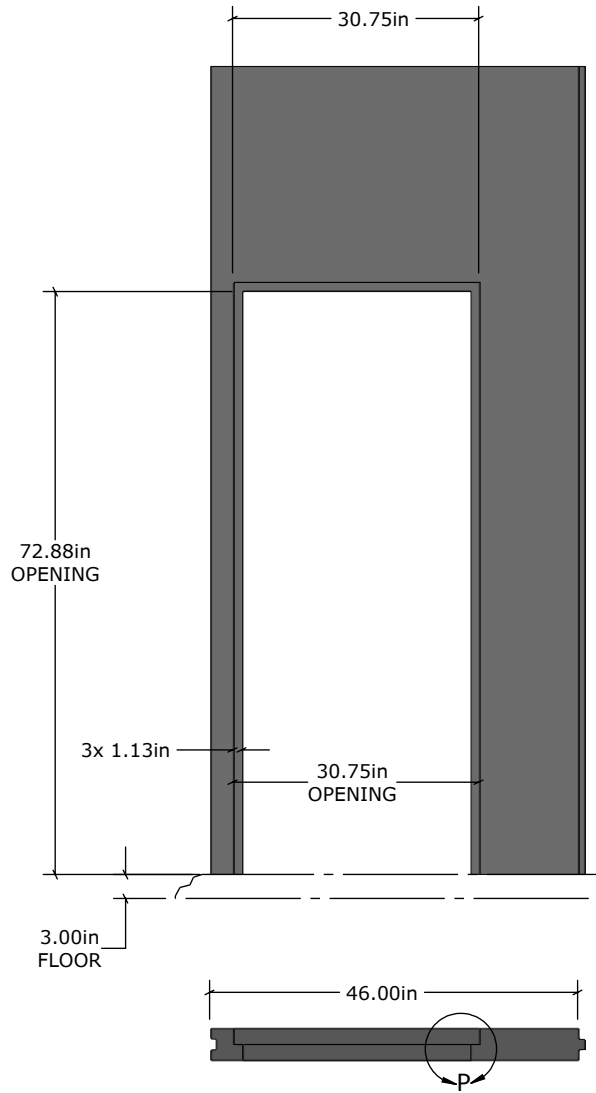
SIGNATURE:

ATTENTION!

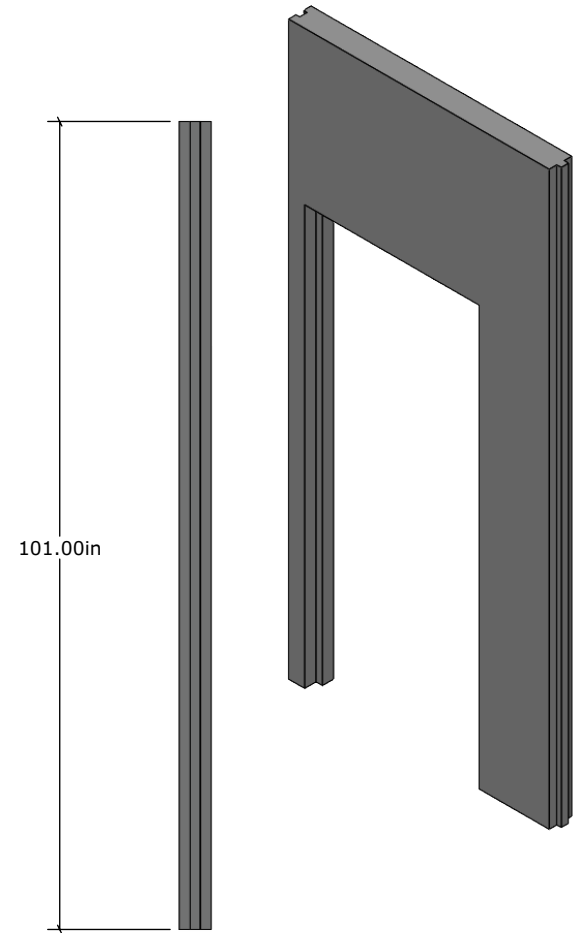
PROPRIETARY AND CONFIDENTIAL

THIS SET OF COLD STORAGE ROOM SHOP DRAWINGS ARE PRELIMINARY ONLY AND BEING SUBMITTED FOR APPROVAL PRIOR TO AVAILABLE SITE DIMENSIONS. ALL FINAL DIMENSIONS CONFORMING TO SPECIFIC SITE CONDITIONS AND/OR THE INTERIOR MODULAR SHELVING UNIT SPACE SHALL BE ESTABLISHED PRIOR TO ANY FABRICATION.

THIS PRINT IS THE PROPERTY OF QOLDFUSION INC., AND IT EMBODIES A PROPRIETARY DESIGN WHICH SHALL NOT BE DISCLOSED, USED, OR DUPLICATED FOR PROCUREMENT OR MANUFACTURING PURPOSES UNLESS SPECIFIC WRITTEN AUTHORIZATION BY QOLDFUSION INC. IS GIVEN. THIS PRINT IS LOANED, AND SUBJECT TO RETURN UPON DEMAND.



DETAIL P
SCALE 1 : 5



INTERIOR FREEZER DOOR PANEL



28310 Ave Crocker UNIT C,
VALENCIA, CA 91355
PHONE: 661-505-7913
WEB SITE: <https://qoldfusion.com>



PART NAME:
01-MAGNIFICA_WALK-IN-COLD-PANTRY_ASSY_A

ASSEMBLY:
MAGNIFICA_WALK-IN-COLD-PANTRY_ASSY_A_PACIFIC

APPROVED BY:

SIGNATURE:

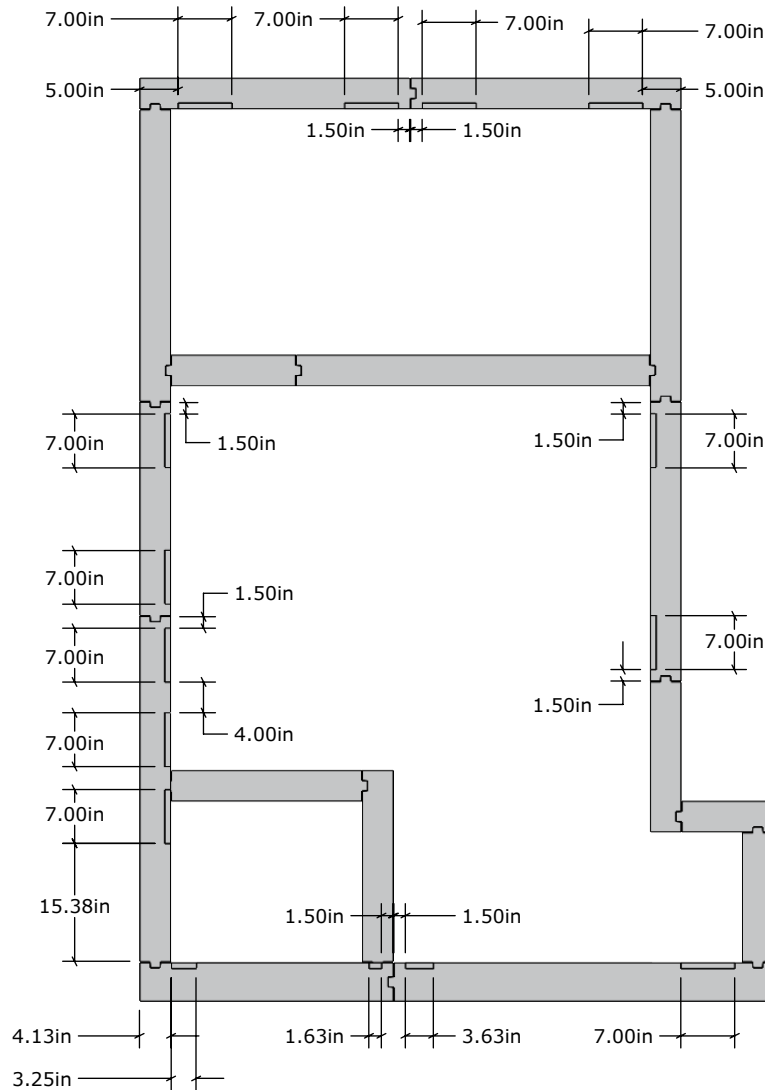
DO NOT SCALE DRAWING	UNLESS OTHERWISE SPECIFIED:
SHEET: 6 OF 8	DIMENSIONS ARE IN INCHES
SCALE: 1:24	TOLERANCES:
SHEET SIZE: A	FRACTIONAL \pm 1/32"
DRAWN BY: J.Hamilton	TWO PLACE DECIMAL \pm .02"
STATUS: In Design	THREE PLACE DECIMAL \pm .005"

ATTENTION!

PROPRIETARY AND CONFIDENTIAL

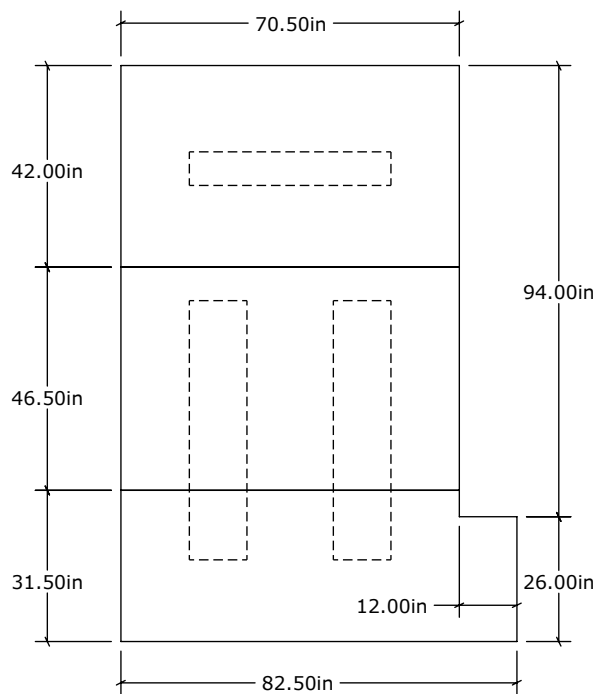
THIS SET OF COLD STORAGE ROOM SHOP DRAWINGS ARE PRELIMINARY ONLY AND BEING SUBMITTED FOR APPROVAL PRIOR TO AVAILABLE SITE DIMENSIONS. ALL FINAL DIMENSIONS CONFORMING TO SPECIFIC SITE CONDITIONS AND/OR THE INTERIOR MODULAR SHELVING UNIT SPACE SHALL BE ESTABLISHED PRIOR TO ANY FABRICATION.

THIS PRINT IS THE PROPERTY OF QOLDFUSION INC., AND IT EMBODIES A PROPRIETARY DESIGN WHICH SHALL NOT BE DISCLOSED, USED, OR DUPLICATED FOR PROCUREMENT OR MANUFACTURING PURPOSES UNLESS SPECIFIC WRITTEN AUTHORIZATION BY QOLDFUSION INC. IS GIVEN. THIS PRINT IS LOANED, AND SUBJECT TO RETURN UPON DEMAND.

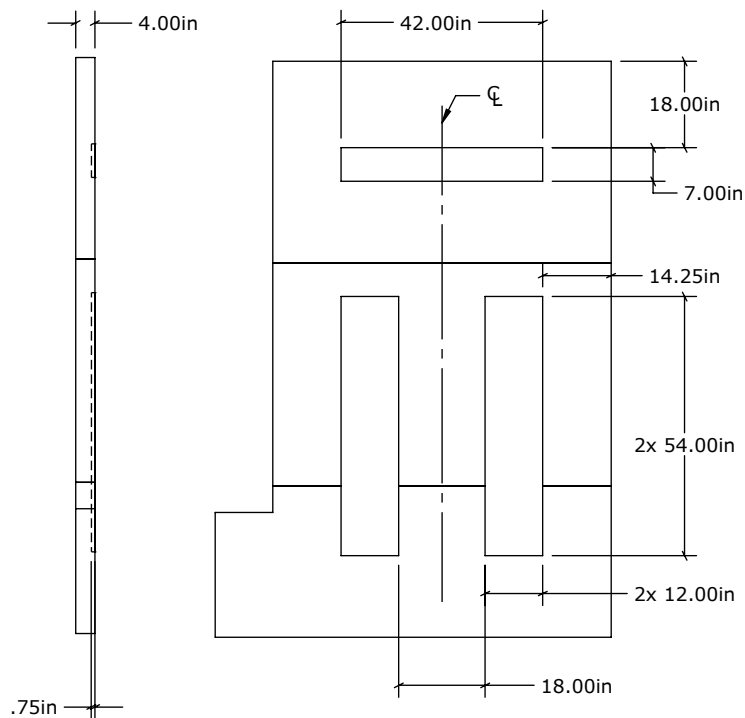


WALL PANEL BACKING, .75in MARINE GRADE PLYWOOD

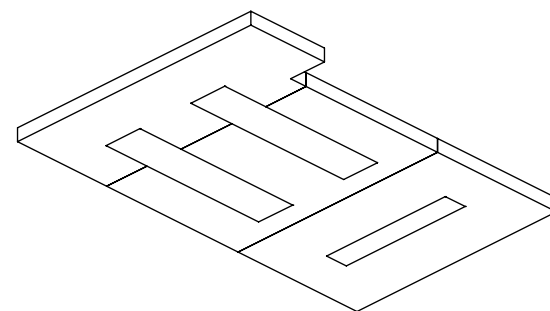
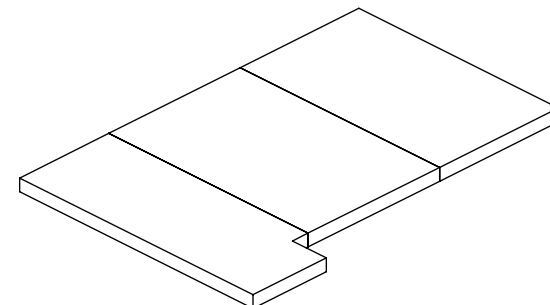
<div><div><div><div><div><div></div><div>QOLDFUSION™</div></div></div><div><div><div></div><div></div><div></div></div></div><div><div><div></div><div></div><div></div></div></div><div><div><div></div><div></div><div></div></div></div><div><div><div></div><div></div><div></div></div></div></div></div><div>28310 Ave Crocker UNIT C, VALENCIA, CA 91355 PHONE: 661-505-7913 WEB SITE: https://qoldfusion.com</div></div>	PART NAME: 01-MAGNIFICA_WALK-IN-COLD-PANTRY_ASSY_A		APPROVED BY:	
	ASSEMBLY: MAGNIFICA_WALK-IN-COLD-PANTRY_ASSY_A_PACIFIC		SIGNATURE:	
	DO NOT SCALE DRAWING	UNLESS OTHERWISE SPECIFIED:	ATTENTION!	PROPRIETARY AND CONFIDENTIAL
	SHEET: 7 OF 8	DIMENSIONS ARE IN INCHES	THIS SET OF COLD STORAGE ROOM SHOP DRAWINGS ARE PRELIMINARY ONLY AND BEING SUBMITTED FOR APPROVAL PRIOR TO AVAILABLE SITE DIMENSIONS. ALL FINAL DIMENSIONS CONFORMING TO SPECIFIC SITE CONDITIONS AND/OR THE INTERIOR MODULAR SHELVING UNIT SPACE SHALL BE ESTABLISHED PRIOR TO ANY FABRICATION.	
PROJECT: MAGNIFICA RESIDENCE, WALK-IN	SCALE: 1:25	TOLERANCES:		
LOCATION: FLORIDA	SHEET SIZE: A	FRACTIONAL ± 1/32"		
ADDRESS: TBD	DRAWN BY: J.Hamilton	TWO PLACE DECIMAL ± .02"		
DATE: 9/27/2024	STATUS: In Design	THREE PLACE DECIMAL ± .005"	THIS PRINT IS THE PROPERTY OF QOLDFUSION INC., AND IT EMBODIES A PROPRIETARY DESIGN WHICH SHALL NOT BE DISCLOSED, USED, OR DUPLICATED FOR PROCUREMENT OR MANUFACTURING PURPOSES UNLESS SPECIFIC WRITTEN AUTHORIZATION BY QOLDFUSION INC. IS GIVEN. THIS PRINT IS LOANED, AND SUBJECT TO RETURN UPON DEMAND.	
REV.: A				



TOP VIEW



INSIDE VIEW



CEILING PANEL BACKING, .75in MARINE GRADE PLYWOOD



28310 Ave Crocker UNIT C,
VALENCIA, CA 91355
PHONE: 661-505-7913
WEB SITE: <https://qoldfusion.com>



PART NAME:

MAGNIFICA_ROOF-PANEL_A

APPROVED BY:

ASSEMBLY:

MAGNIFICA_WALK-IN-COLD-PANTRY_ASSY_A_PACIFIC

SIGNATURE:

DO NOT SCALE DRAWING

SHEET: 8 OF 8

SCALE: 1:40

SHEET SIZE: A

DRAWN BY: J.Hamilton

STATUS: In Design

UNLESS OTHERWISE SPECIFIED:

DIMENSIONS ARE IN INCHES

TOLERANCES:

FRACTIONAL \pm 1/32"

TWO PLACE DECIMAL \pm .02"

THREE PLACE DECIMAL \pm .005"

ATTENTION!

THIS SET OF COLD STORAGE ROOM SHOP DRAWINGS ARE PRELIMINARY ONLY AND BEING SUBMITTED FOR APPROVAL PRIOR TO AVAILABLE SITE DIMENSIONS. ALL FINAL DIMENSIONS CONFORMING TO SPECIFIC SITE CONDITIONS AND/OR THE INTERIOR MODULAR SHELVING UNIT SPACE SHALL BE ESTABLISHED PRIOR TO ANY FABRICATION.

PROPRIETARY AND CONFIDENTIAL

THIS PRINT IS THE PROPERTY OF QOLDFUSION INC., AND IT EMBODIES A PROPRIETARY DESIGN WHICH SHALL NOT BE DISCLOSED, USED, OR DUPLICATED FOR PROCUREMENT OR MANUFACTURING PURPOSES UNLESS SPECIFIC WRITTEN AUTHORIZATION BY QOLDFUSION INC. IS GIVEN. THIS PRINT IS LOANED, AND SUBJECT TO RETURN UPON DEMAND.