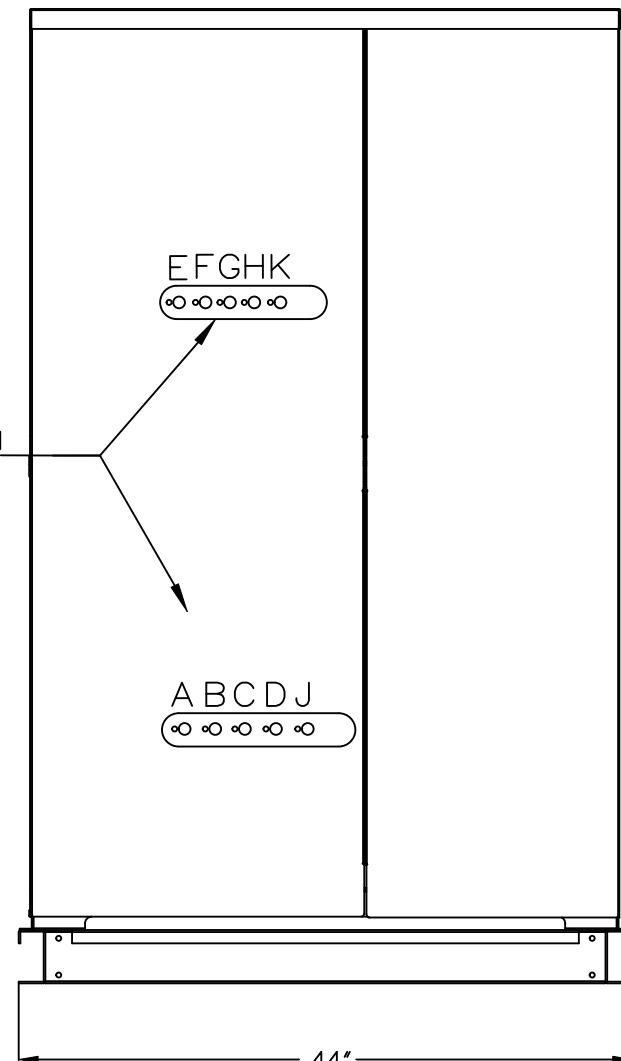


REFRIGERATION LINES



SIDE VIEW

1. UNIT WEIGHT APPROXIMATELY 3,120 LBS
2. INSTALLATION CLEARANCE REQUIRES 3 FT ON ALL SIDES



FUSE SIZE: 45 AMPS
MINIMUM AMPACITY= 40.3 AMPS

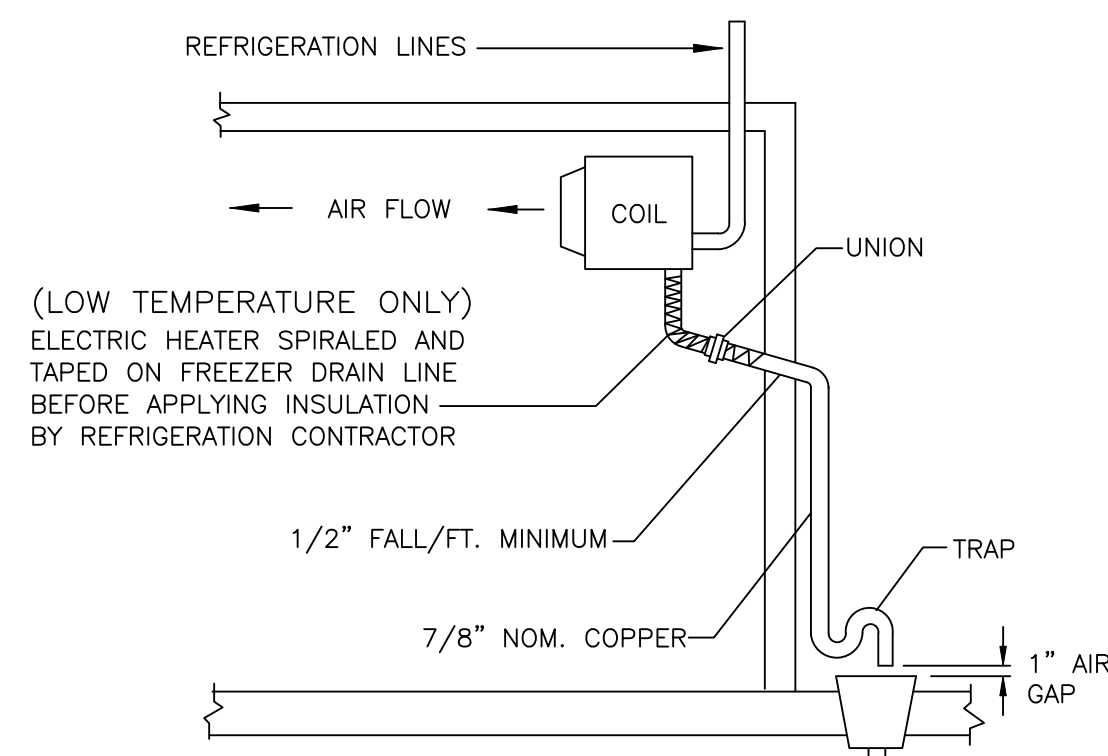
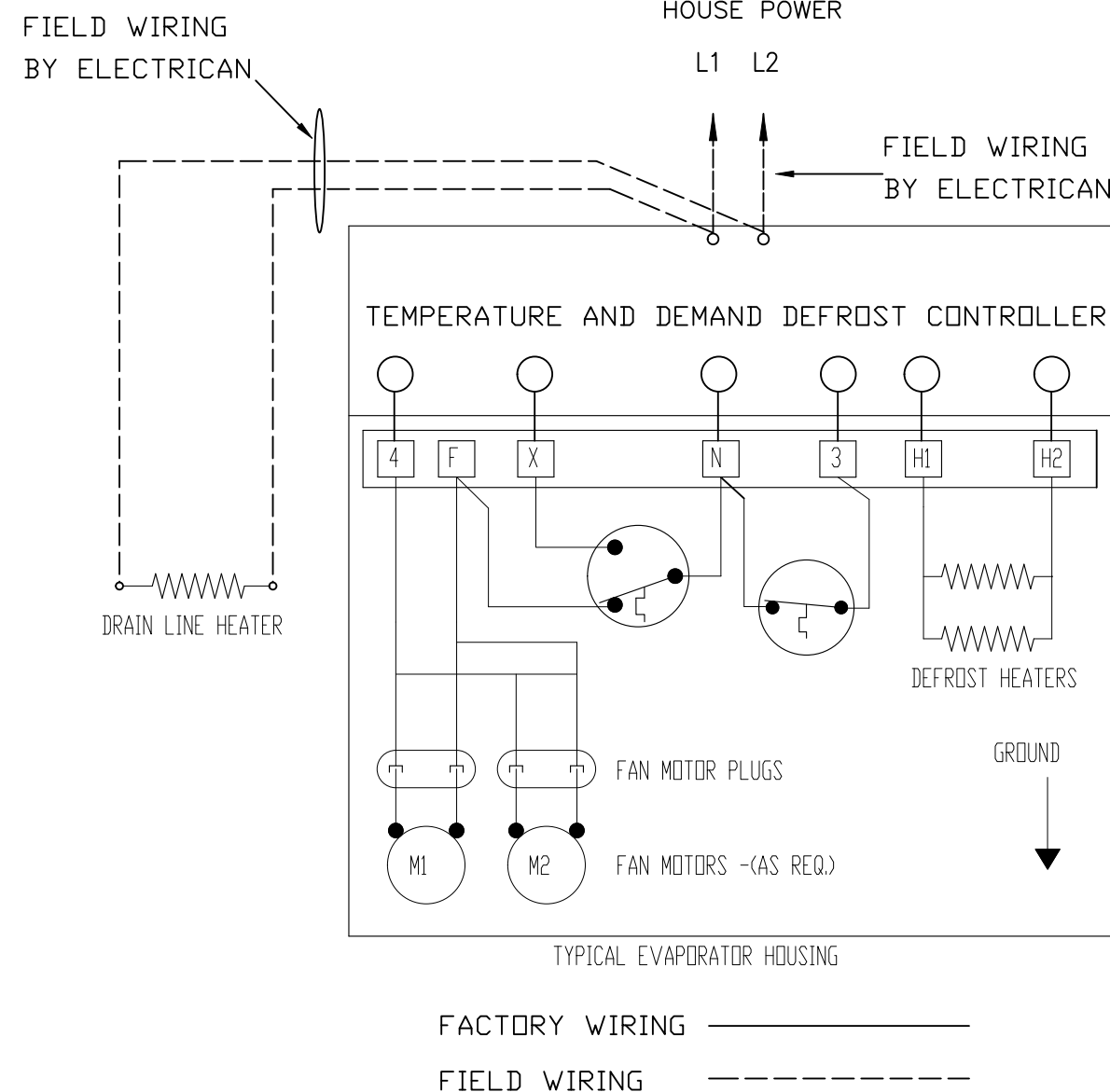
IDENT.		FIXTURES			COMPRESSORS								EVAPORATOR COILS										LINE SIZES **			DEFROS OPTION NO.
SYSTEM	ITEM	DESCRIPTION	FIXT *F		REFRIG. R-	MODEL NO.	H.P.	ELECTRICAL CHARACTERISTIC AT 60 HZ.			CAPACITY	DEFROST *	QUANTITY	MODEL NO.	FAN 1 PH		HEATER			TOTAL UNIT AMP. [RLA]	SUCTION	DISCH.	LIQUID			
			FIXT.	SUCT.				RLA	V	PH					AMP	V	PH									
A	801.1/802.1	WALK-IN COOLER	35	25	448A	ZS13KAE	1.5	8.7	208	3	13.4	E	1	KTM313ME	.9	208	9.9	208	1	8.7	7/8		3/8	KE2/MT		
B	804/805	WALK-IN FREEZER	-10	-20	448A	ZF06KAE	2.0	8.3	208	3	6.5	E	1	KTM206LE	.6	208	6.7	208	1	8.3	5/8		3/8	DEMAND		
C	801/802	WALK-IN COOLER	35	25	448A	ZB08KAE	.90	4.7	208	3	9.1	E	1	KTM208ME	.9	208	9.9	208	1	4.7	7/8		3/8	KE2/MT		
D	822/823	BEER COOLER	35	25	448A	ZB08KAE	.90	4.7	208	3	9.1	E	1	KTM208ME	.9	208	9.9	208	1	4.7	7/8		3/8	KE2/MT		
E	635	1 DR FREEZER BASE	0	-10	448A	RFT22C1E	.30	4.7	208	1	2.0	0		BY OTHERS						4.7	1/2		3/8			
F		MULTIPLEX		20	448A	ZB06KAE	.70	4.3	208	3	5.8	0								4.3	5/8		3/8			
F1	142	2 DR REFRIGERATED BASE	35											BY OTHERS												
F2	246.1	10 DRAWER REFRIG BASE	35											BY OTHERS												
G		MULTIPLEX		20	448A	ZB06KAE	.70	4.3	208	3	5.8	0								4.3	5/8		3/8			
G1	153	3 DR REFRIGERATED BASE	35											BY OTHERS												
G2	285	2 DR REFRIGERATED BASE	35											BY OTHERS												
H		MULTIPLEX		20	448A	ZB06KAE	.70	4.3	208	3	5.8	0								4.3	5/8		3/8			
H1	164	3 DR REFRIGERATED BASE	35											BY OTHERS												
H2	144	SUSHI CASE	35											BY OTHERS												
J		MULTIPLEX		20	448A	ZS11KAE	1.1	9.3	208	3	10.5	0								9.3	7/8		3/8			
J1	181	5 SECTION SALAD COUNTER	35											BY OTHERS												
J2	246	8 DRAWER REFRIG BASE	35											BY OTHERS												
K		MULTIPLEX		20	448A	ZB06KAE	.70	4.3	208	3	5.8	0								4.3	5/8		3/8			
K1	633	2 DR BACK BAR REFRIG.	35											BY OTHERS												
K2	635	1 DR BACK BAR REFRIG.	35											BY OTHERS												
K2	635	1 DR BACK BAR REFRIG.	35											BY OTHERS												

* * VERIFY LINE SIZES WITH
JOB SITE CONDITIONS

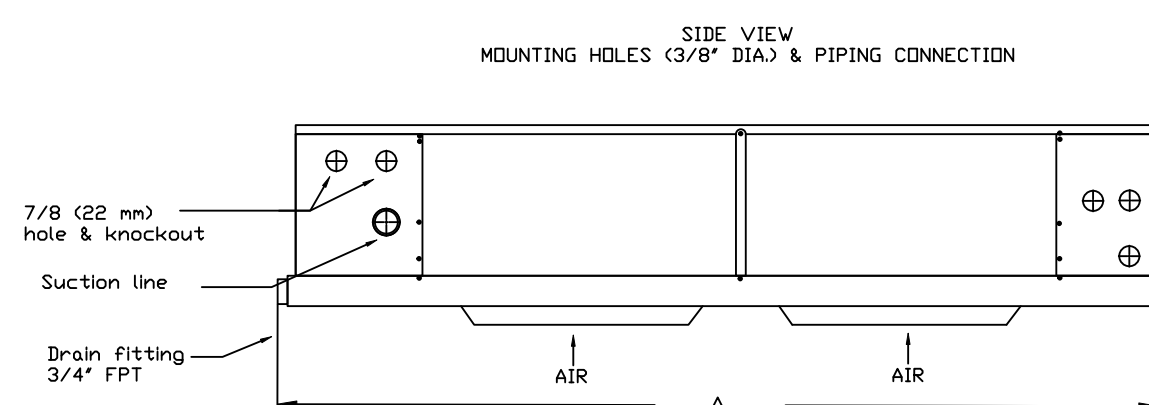
NOTE:

- ALL COMPRESSORS AND CONDENSER CIRCUITS ARE SIZED TO OPERATE AT 95° F AMBIENT AIR TEMPERATURE
- ALL WALK-IN EVAPORATOR COILS SUPPLIED WITH ECM MOTORS AND PATENTED "SMART SPEED TECHNOLOGY" WITH 2 - SPEED MOTORS
- ALL WALK-IN EVAPORATOR COILS ARE SUPPLIED WITH MATCHING K2 CONTROL, SOLENOID VALVES & EXPANSION VALVES FACTORY INSTALLED
- ALL EVAPORATOR COILS "BY OTHERS" MUST BE SUPPLIED WITH THERMOSTATS, SOLENOID VALVES & EXPANSION VALVES FACTORY INSTALLED

DEMAND—ELECTRIC DEFROST WIRING

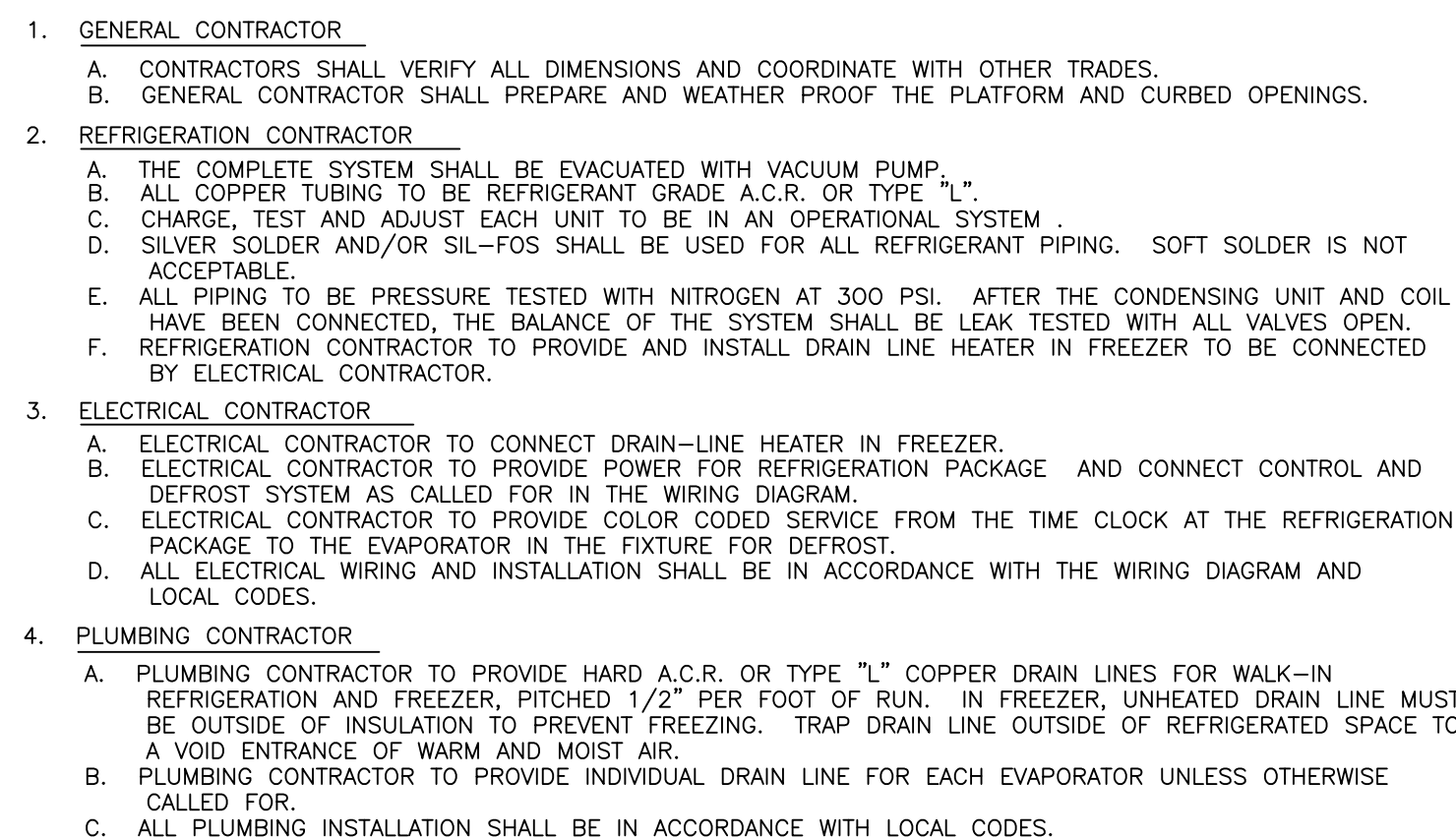


KTM EVAPORATOR COIL



MODEL KTM	NO. OF FANS	A	B	SUCTION CONNECTION (ID) SWEAT
		IN	IN	
206LE	2	42 3/4	23 5/8	5/8
208ME	2	42 3/4	23 5/8	5/8
313ME	3	59 1/2	23 5/8	5/8

GENERAL NOTES



REFRIGERATION NOTES

- REFRIGERATION SYSTEM:
- THE REFRIGERATION SYSTEM SHALL BE AN ADMIRAL REFRIGERATION MODEL # ADR-12D, ETL LISTED AS PER UL STANDARD 1995 AND CERTIFIED TO CSA STANDARD C22.2 NO. 236 AS MANUFACTURED BY ADMIRAL REFRIGERATION INC. 28310 AVENUE CROCKER, UNIT 'C', VALENCIA, CA 91355. PR: # (661) 505-7913.
2. FRAME:
- THE FRAME SHALL BE WELDED, CLEANED, DE-BURRED AND CONSTRUCTED OF STRUCTURAL STEEL. THE WEATHER PROOF HOUSING AND LOUVERED DOORS SHALL BE MADE OF GALVANIZED STEEL AND POWDER COATED FOR PROTECTION FROM CORROSION.
3. COMPRESSOR MOTOR AND COMPONENTS:
- THE SYSTEM SHALL BE EQUIPPED WITH SCROLL, SEMI-HERMETIC AND HERMETIC COMPRESSORS. EACH COMPRESSOR SHALL BE PRE-PIPED BUT NOT LIMITED TO FILTER DRIER, SIGHT GLASS, HEAD PRESSUR CONTROL, DISCHARGE PRESSURE CONTROL AND VIBRATION ELIMINATORS FOR SEMI-HERMETIC. WHICH IS FACTORY ASSEMBLED AND PRESSURE TESTED. EACH COMPRESSOR SHALL INCLUDE A CRANKCASE HEATER FOR LOW AMBIENT PROTECTION. LOW TEMPERATURE (FREEZER) SYSTEMS SHALL BE EQUIPPED WITH ELECTRIC DEFROST TIME CLOCKS TO BE FIELD SET ON START UP OF THE SYSTEM.
4. CONDENSER:
- THE CONDENSER SHALL BE MULTI-CIRCUIT WITH 3/8" RIFFLE TUBING, EACH CIRCUIT SIZING TO OPERATE AT A DESIGN TEMPERATURE CONDITION WITH A 20° MAXIMUM TEMPERATURE DIFFERENCE ACROSS THE CONDENSER SURFACE. THE CONDENSER SHALL HAVE FREE AIR MOVEMENT WITH NO STATIC PRESSURE EXCEPT FOR THAT CAUSED BY THE FINNED SURFACES. 100% OF ALL CONDENSER AIR SHALL BE DIRECTED OVER THE COMPRESSOR BODIES.
5. ELECTRICAL COMPONENTS:
- THE SYSTEM SHALL HAVE A FACTORY MOUNTED RECESSED, PRE-WIRED, WEATHER RATED ETL LISTED ELECTRICAL CONTROL PANEL WITH MAIN DISCONNECT FOR A SINGLE POINT ELECTRICAL CONNECTION BY THE ELECTRICAL CONTRACTOR. ELECTRICAL COMPONENTS SHALL INCLUDE BUT NOT LIMITED TO COMPRESSORS, TIME CLOCKS, CIRCUIT BREAKERS, CONTACTORS, RELAYS, FAN MOTORS AND OTHER CONTROLS OR COMPONENTS DEEMED NECESSARY FOR OPERATION OF THE SYSTEM.
6. REFRIGERATION LINES:
- REFRIGERATION LINES SHALL BE A.C.R. GRADE TYPE "L" AND BE PRE-PIPED AND EXTENDED IN A NEAT AND ORDERLY MANNER TO ONE END OF THE SYSTEM. FOR A SINGLE POINT CONNECTION, ALL PIPING SHALL BE INVOICED AND SECURED WITH UNISTRUT CLAMPS. EACH SYSTEM SHALL BE PRESSURIZED, CHECKED, TESTED AND SHIPPED WITH DRY NITROGEN.

GENERAL NOTES

#1	REVISED TO AIR-COOLED, ADDED SYSTEM 'C'	3.28.19
#2	ADDED SYSTEMS 'D' & 'E', REVISED SIZE, WEIGHT AND FUSE SIZE	5.11.19
#3	ADDED SYSTEMS 'F' & 'G', REVISED SIZE, WEIGHT AND FUSE SIZE	5.6.19
#4	REVISED DESCRIPTION ON SYSTEMS 'A7', 'A9' & 'A10'. ADDED SYSTEM 'A15'.	7.30.19
#5	ADDED EVAPORATOR COILS W/KEZ TO SYSTEMS 'A5', 'A6', 'A7', 'A8', 'A9' & 'A10'	10.1.19
#6	REVISED TO SINGLE PIPED SYSTEM. DELETED TAYLOR BEV. DISPENSER C.U'S, REVISED ENGINEERING SUMMARY, WEIGHT, MCA AND FUSE SIZE	8.31.21
REV	DESCRIPTION	DATE



Ph: (661) 505-7913

Project Name and Address
REFRIGERATION PLAN

JOEY RESTAURANT GROUP
AVENTURA, FL

NOT DRAWN TO SCALE

DRAWING NUMBER 19-1012	JOB NUMBER
DATE 1-29-2018	SHEET NUMBER R-1
DRAWN BY R.D.	