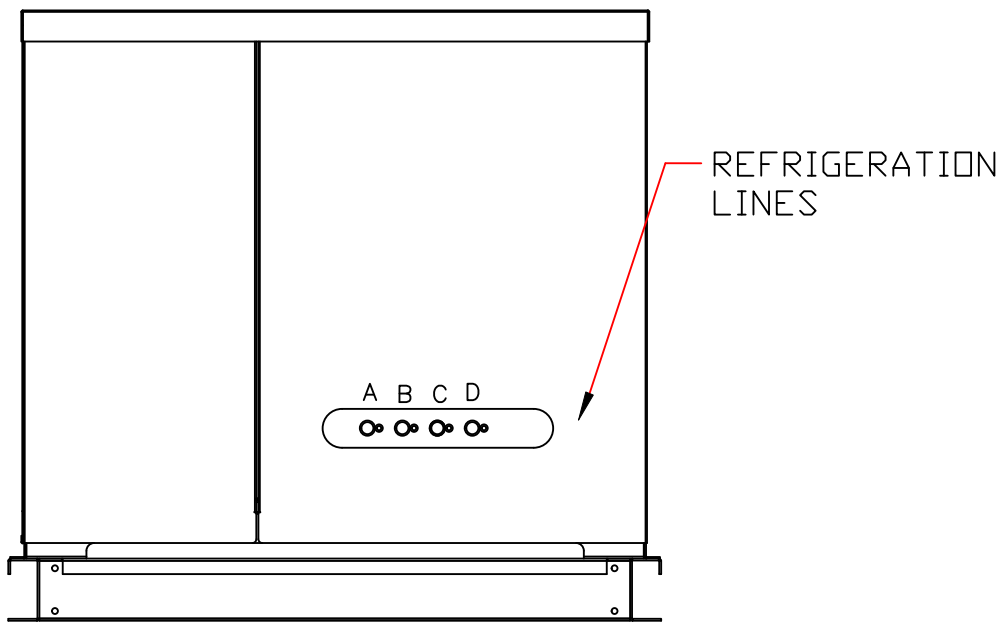
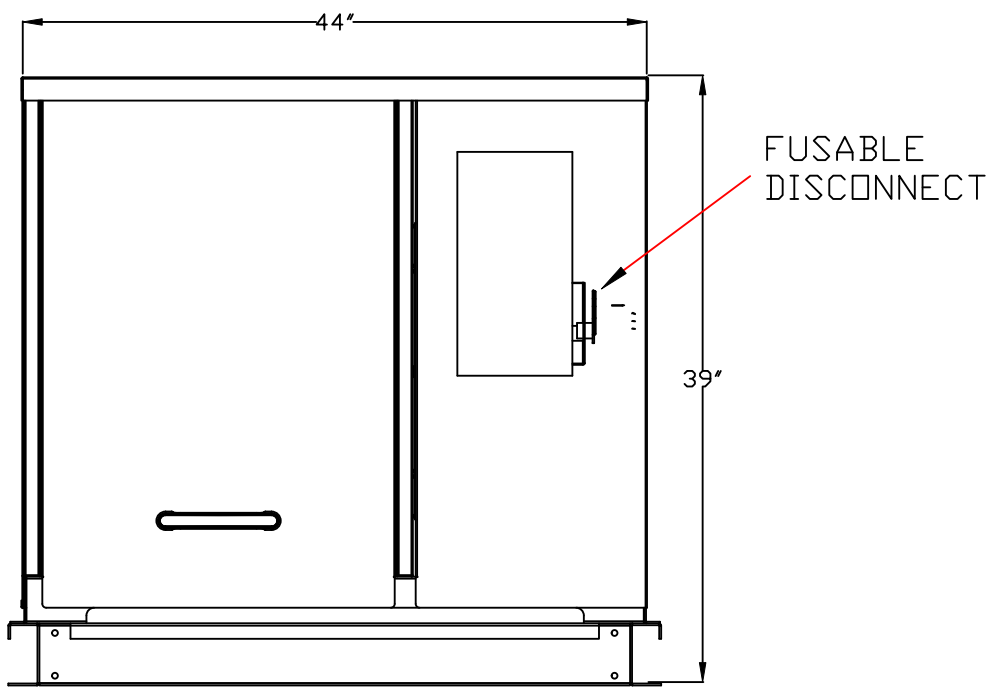


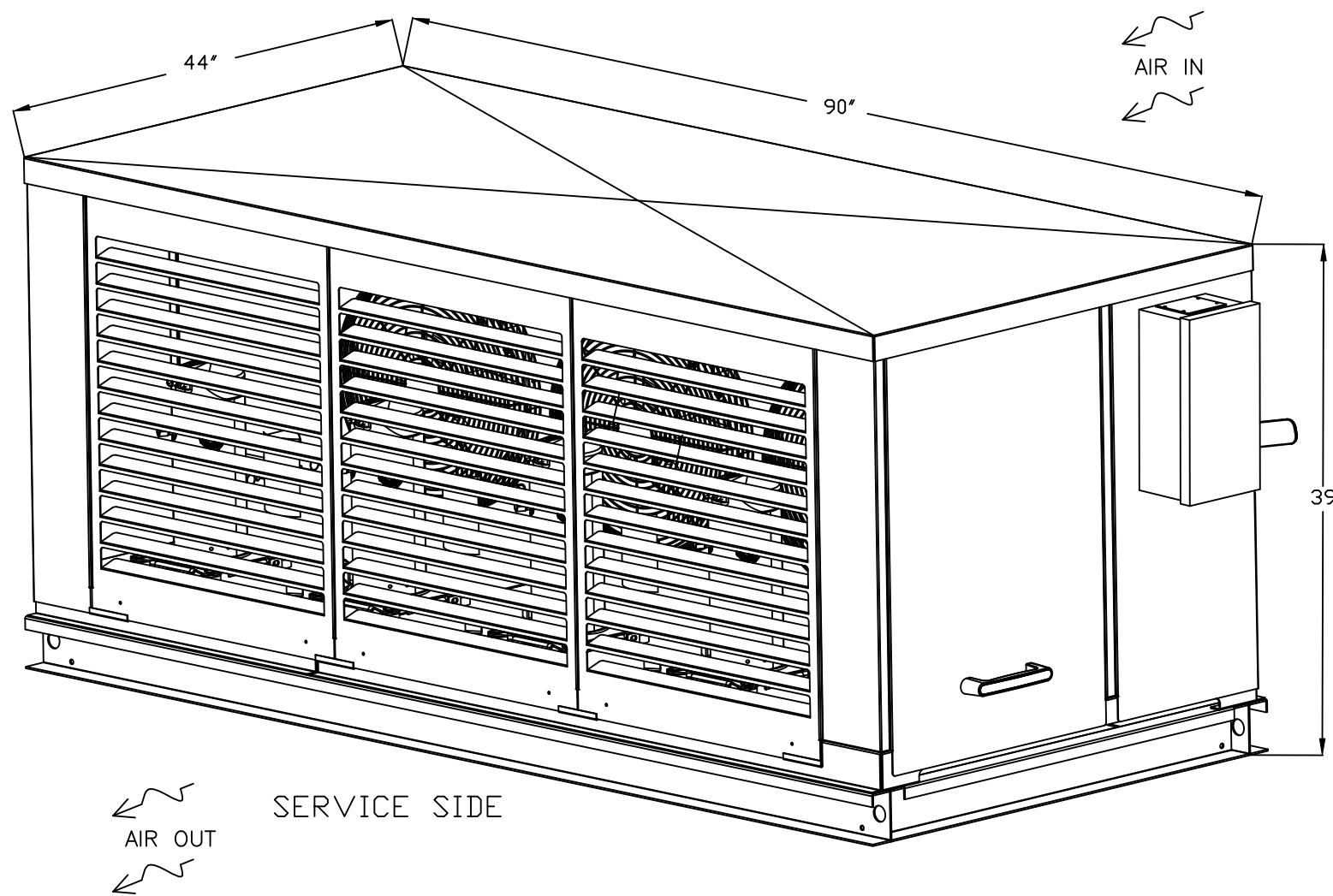
REFRIGERATION LINES



ELECTRICAL CONNECTIONS



ADMIRAL MODEL # ADR-8-AC



GENERAL NOTES:

- UNIT WEIGHT APPROXIMATELY 1,225 LBS
- INSTALLATION CLEARANCE REQUIRES 3 FT ON ALL SIDES

ENGINEERING SUMMARY

POWER SUPPLY: 208-230V/3PH/60HZ FUSE SIZE: 40 AMPS
MINIMUM AMPACITY= 31.7 AMPS

SYSTEM	IDENT.	FIXTURES		COMPRESSORS								EVAPORATOR COILS										LINE SIZES **			DEFROST OPTION NO.
	ITEM	DESCRIPTION	FIXT	SUCT.	REFRIG. R.-	MODEL NO.	H.P.	ELECTRICAL CHARACTERISTIC AT 60 HZ.			CAPACITY	DEFROST *	QUANTITY	MODEL NO.	FAN 1 PH		HEATER			TOTAL UNIT AMP [RLA]	SUCTION	DISCH.	LIQUID		
			FIXT.					RLA	V	PH					AMP	V	AMP	V	PH						
A		MULTIPLEX		20	448A	RST45C1E	.50	4.6	208	1	4.3	O								4.6	1/2		3/8	TMR	
A1	00-020	3 DR BACK BAR REFRIGERATOR	38											BY OTHERS											
A2	00-021	2 DR BACK BAR REFRIGERATOR	38											BY OTHERS											
B	00-113	KEG COOLER	35	25	448A	ZB08KAE	.90	4.7	208	3	9.1	O	1	RL6A073	1.6	115				4.7	7/8		3/8	KE2/MT	
C	00-104	WALK-IN COOLER	35	25	448A	ZS11KAE	1.1	9.3	208	3	11.8	O	1	RL6A094	1.6	115				9.3	7/8		3/8	KE2/MT	
D	00-105	WALK-IN FREEZER	-10	-20	448A	ZF06KAE	2.0	8.3	208	3	6.5	E	1	RL6E066	1.0	208	9.8	208	1	8.3	5/8		3/8	KE2/LT	
		(2) CONDENSER FAN MOTOR					1/4	1.8	208	1										3.6					

LEGEND * O—OFF CYCLE E—ELECTRIC G—GRAVITY [W/TIMER]
E—DEFROST CLOCK BY FIXTURE MANUFACTURER

* * VERIFY LINE SIZES WITH JOB SITE CONDITIONS

SYSTEM SHALL BE ETL LISTED CONFORMS TO UL STD 1995

NOTE: - ALL COMPRESSORS AND CONDENSER CIRCUITS ARE SIZED TO OPERATE AT 95° F AMBIENT AIR TEMPERATURE
- ALL WALK-IN EVAPORATOR COILS SUPPLIED WITH ECM MOTORS AND PATENTED "SMART SPEED TECHNOLOGY" WITH 2 - SPEED MOTORS
- ALL WALK-IN EVAPORATOR COILS ARE CONTROLLED WITH MATCHING KE2 CONTROL, SOLENOID VALVES & EXPANSION VALVES FACTORY INSTALLED
- ALL EVAPORATOR COILS "BY OTHERS" MUST BE SUPPLIED WITH THERMOSTATS, SOLENOID VALVES, AND EXPANSION VALVES, FACTORY INSTALLED
- UNIT SUPPLIED WITH COPPER FINNED CONDENSER COIL FOR SALT AIR PROTECTION



GENERAL NOTES

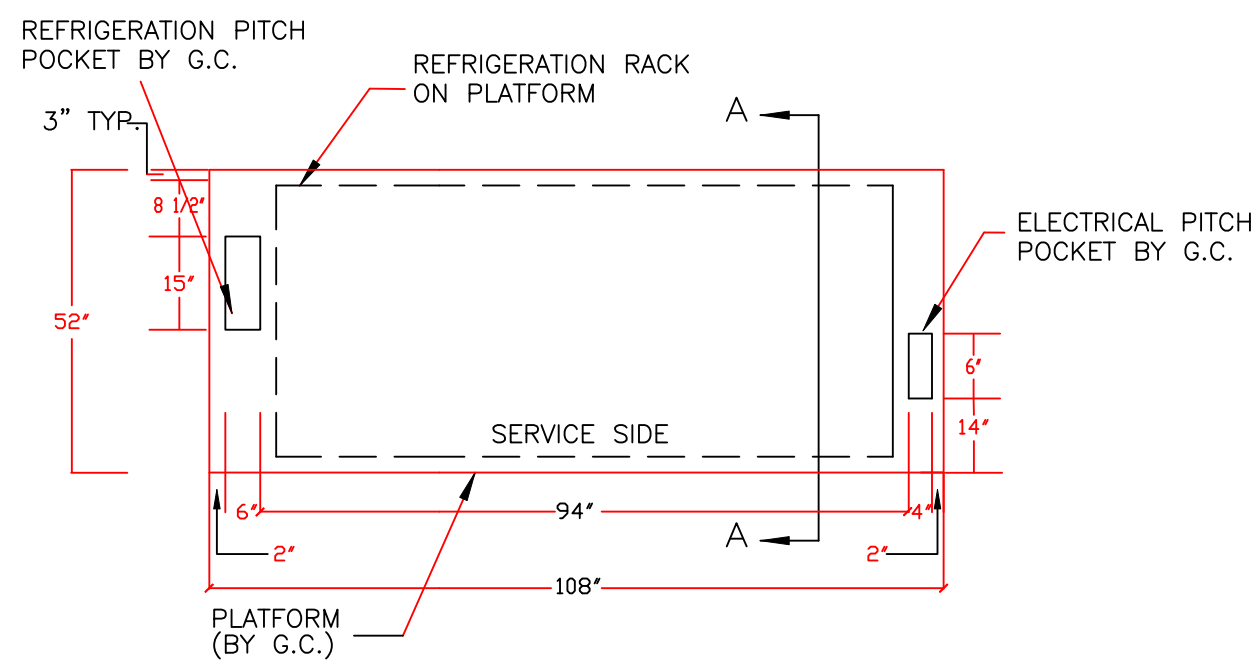
- GENERAL CONTRACTOR
A. CONTRACTORS SHALL VERIFY ALL DIMENSIONS AND COORDINATE WITH OTHER TRADES.
B. GENERAL CONTRACTOR SHALL PREPARE AND WEATHER PROOF THE PLATFORM AND CURBED OPENINGS.
- REFRIGERATION CONTRACTOR
A. THE COMPLETE SYSTEM SHALL BE EVACUATED WITH VACUUM PUMP.
B. ALL COPPER TUBING TO BE REFRIGERANT GRADE A.C.R. OR TYPE "L".
C. CHARGE, TEST AND ADJUST EACH UNIT TO BE IN AN OPERATIONAL SYSTEM.
D. SILVER SOLDER AND/OR SIL-FOS SHALL BE USED FOR ALL REFRIGERANT PIPING. SOFT SOLDER IS NOT ACCEPTABLE.
E. ALL PIPING TO BE PRESSURE TESTED WITH NITROGEN AT 300 PSI. AFTER THE CONDENSING UNIT AND COIL HAVE BEEN CONNECTED, THE BALANCE OF THE SYSTEM SHALL BE LEAK TESTED WITH ALL VALVES OPEN.
F. REFRIGERATION CONTRACTOR TO PROVIDE AND INSTALL DRAIN LINE HEATER IN FREEZER TO BE CONNECTED BY ELECTRICAL CONTRACTOR.
- ELECTRICAL CONTRACTOR
A. ELECTRICAL CONTRACTOR TO CONNECT DRAIN-LINE HEATER IN FREEZER.
B. ELECTRICAL CONTRACTOR TO PROVIDE POWER FOR REFRIGERATION PACKAGE AND CONNECT CONTROL AND DEFROST SYSTEM AS CALLED FOR IN THE WIRING DIAGRAM.
C. ELECTRICAL CONTRACTOR TO PROVIDE COLOR CODED SERVICE FROM THE TIME CLOCK AT THE REFRIGERATION PACKAGE TO THE EVAPORATOR IN THE FIXTURE FOR DEFROST.
D. ALL ELECTRICAL WIRING AND INSTALLATION SHALL BE IN ACCORDANCE WITH THE WIRING DIAGRAM AND LOCAL CODES.
- PLUMBING CONTRACTOR
A. PLUMBING CONTRACTOR TO PROVIDE HARD A.C.R. OR TYPE "L" COPPER DRAIN LINES FOR WALK-IN REFRIGERATION AND FREEZER, PITCHED 1/2" PER FOOT OF RUN. IN FREEZER, UNHEATED DRAIN LINE MUST BE OUTSIDE OF INSULATION TO PREVENT FREEZING. TRAP DRAIN LINE OUTSIDE OF REFRIGERATED SPACE TO AVOID ENTRANCE OF WARM AND MOIST AIR.
B. PLUMBING CONTRACTOR TO PROVIDE INDIVIDUAL DRAIN LINE FOR EACH EVAPORATOR UNLESS OTHERWISE CALLED FOR.
C. ALL PLUMBING INSTALLATION SHALL BE IN ACCORDANCE WITH LOCAL CODES.

REFRIGERATION NOTES

THE REFRIGERATION SYSTEM SHALL BE AN ADMIRAL REFRIGERATION MODEL # ADR-8-AC, ETL LISTED AS PER UL STANDARD 1995 AND CERTIFIED TO CSA STANDARD C22.2 NO. 236 AS MANUFACTURED BY ADMIRAL REFRIGERATION INC. 28310 AVENUE CROCKER, UNIT "C", VALENCIA, CA 91355. PH: # (661) 505-7913.

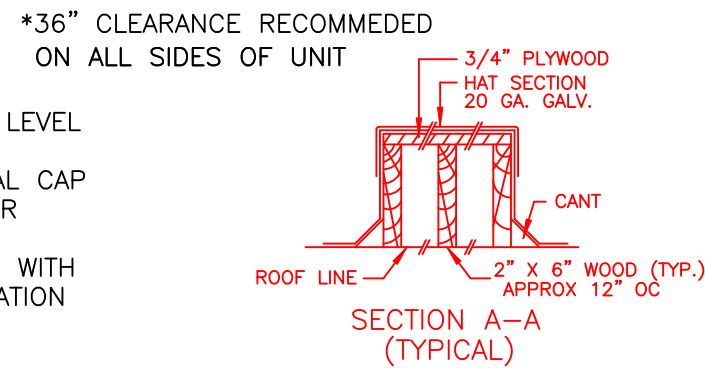
- FRAME:
THE FRAME SHALL BE WELDED, CLEANED, DE-BURRED AND CONSTRUCTED OF STRUCTURAL STEEL. THE WEATHER PROOF HOUSING AND LOUVERED DOORS SHALL BE MADE OF GALVANIZED STEEL AND POWDER COATED FOR PROTECTION FROM CORROSION.
- COMPRESSOR MOTOR AND COMPONENTS:
THE SYSTEM SHALL BE EQUIPPED WITH SCROLL, SEMI-HERMETIC AND HERMETIC COMPRESSORS. EACH COMPRESSOR SHALL BE PRE-PIPED BUT NOT LIMITED TO FILTER DRIER, SIGHT GLASS, HEAD PRESSURE CONTROL DEVICE, DUAL PRESSURE CONTROL AND VIBRATION ELIMINATORS (FOR SEMI-HERMETIC) WHICH IS FACTORY ASSEMBLED AND PRESSURE TESTED. EACH COMPRESSOR SHALL INCLUDE A CRANKCASE HEATER FOR LOW AMBIENT PROTECTION. LOW TEMPERATURE (FREEZER) SYSTEMS SHALL BE EQUIPPED WITH ELECTRIC DEFROST TIME CLOCKS TO BE FIELD SET ON START UP OF THE SYSTEM.
- CONDENSER:
THE CONDENSER SHALL BE MULTI-CIRCUITED WITH 3/8" RIFFLE TUBING, EACH CIRCUIT SIZING TO OPERATE AT A DESIGN TEMPERATURE CONDITION WITH A 20°F MAXIMUM TEMPERATURE DIFFERENCE ACROSS THE CONDENSER SURFACE. THE CONDENSER SHALL HAVE FREE AIR MOVEMENT WITH NO STATIC PRESSURE EXCEPT FOR THAT CAUSED BY THE FINNED SURFACES. 100% OF ALL CONDENSER AIR SHALL BE DIRECTED OVER THE COMPRESSOR BODIES.
- ELECTRICAL COMPONENTS:
THE SYSTEM SHALL HAVE A FACTORY MOUNTED RECESSED, PRE-WIRED, WEATHER RATED ETL LISTED ELECTRICAL CONTROL PANEL WITH MAIN DISCONNECT FOR A SINGLE POINT ELECTRICAL BY THE ELECTRICAL CONTRACTOR. ELECTRICAL COMPONENTS SHALL INCLUDE BUT NOT LIMITED TO COMPRESSORS, TIME CLOCKS, CIRCUIT BREAKERS, CONTACTORS, RELAYS, FAN MOTORS AND OTHER CONTROLS OR COMPONENTS DEEMED NECESSARY FOR OPERATION OF THE SYSTEM.
- REFRIGERATION LINES:
REFRIGERATION LINES SHALL BE A.C.R. GRADE TYPE "L" AND BE PRE-PIPED AND EXTENDED IN A NEAT AND ORDERLY MANNER TO ONE SIDE OF THE SYSTEM FOR A SINGLE-POINT CONNECTION. ALL PIPING SHALL BE ANCHORED AND SECURED WITH UNISTRUT CLAMPS. EACH SYSTEM SHALL BE PRESSURIZED, CHECKED, TESTED AND SHIPPED WITH DRY NITROGEN.

ROOF PAD DETAIL

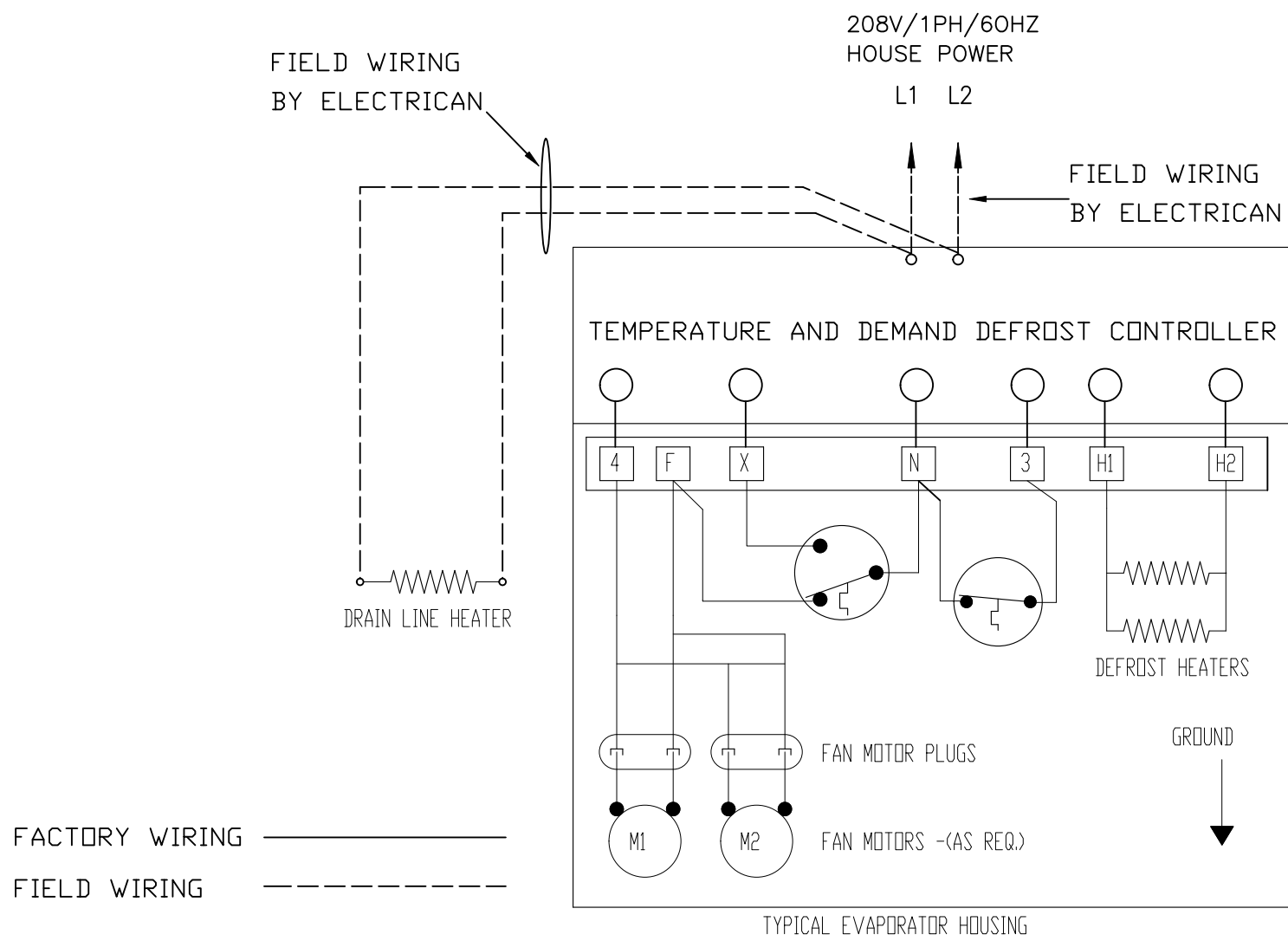


G.C. NOTES:

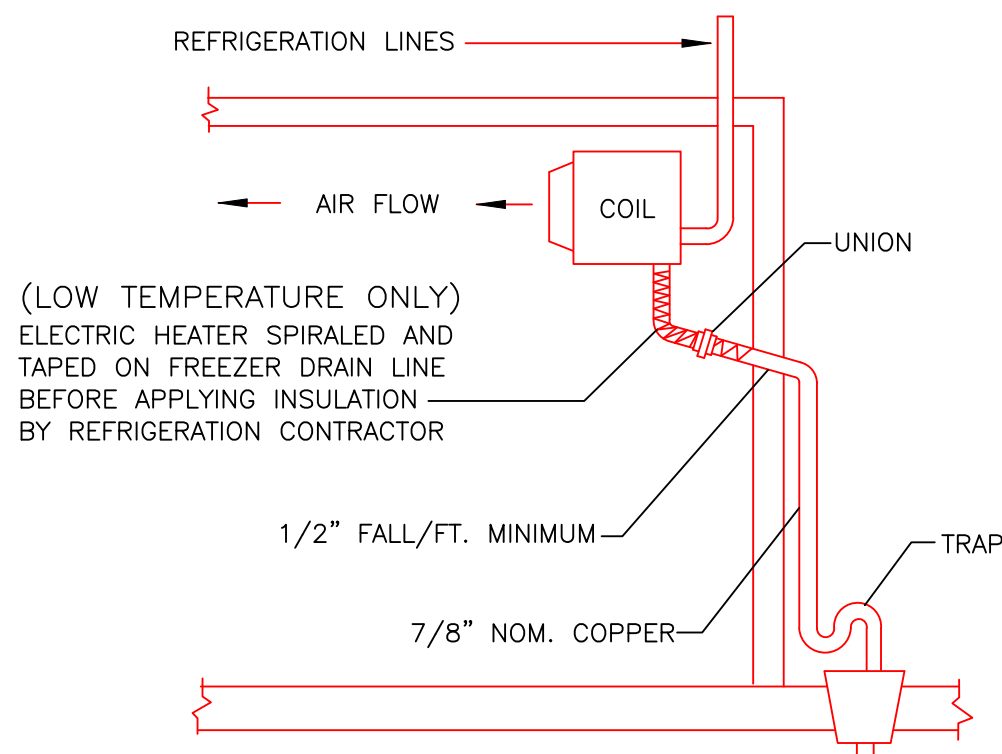
- PLATFORM TO BE 6" HIGH LEVEL IN BOTH DIRECTIONS.
- GC TO PROVIDE SHEETMETAL CAP FOR PLATFORM WITH WATER TIGHT SOLDERED JOINTS
- GC TO BACK FILL OPENING WITH HOT PITCH AFTER INSTALLATION



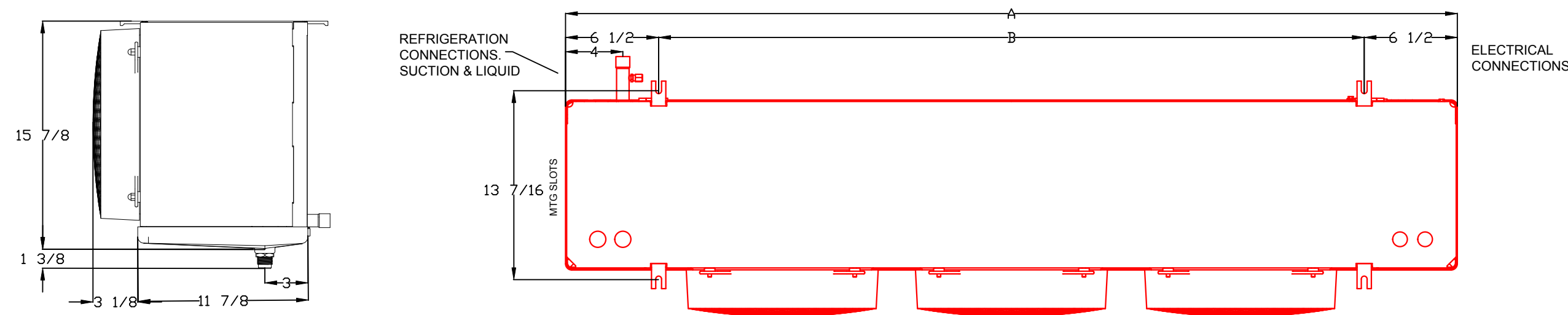
KE2/LT DEMAND-ELECTRIC DEFROST WIRING



DRAIN LINE DETAIL



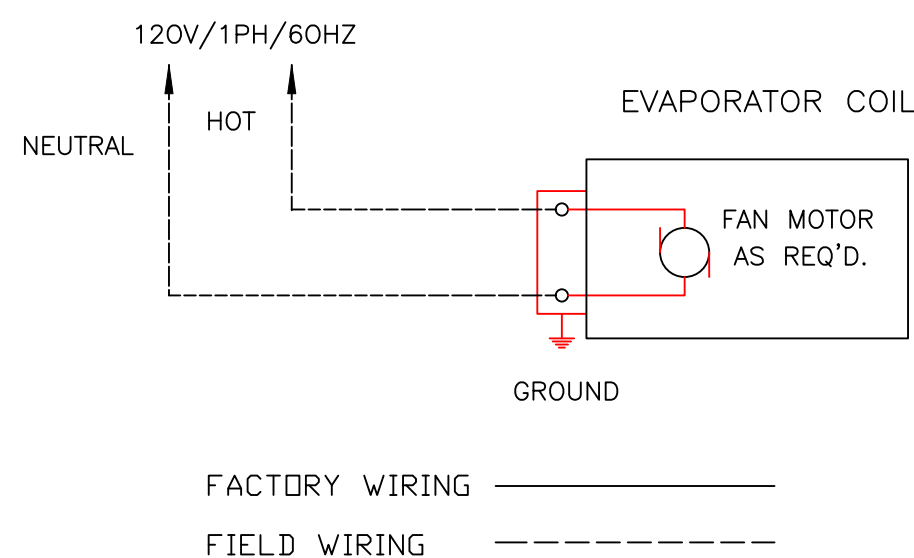
KLP EVAPORATOR COIL



1, 2, AND 3 FAN MODELS (TOP VIEW)

MODEL RL6	NO. OF FANS	A IN	B IN	SUCTION CONNECTION (ID) SWEAT
RL6A073	2	43 5/8	33 1/4	7/8
RL6A094	2	43 5/8	33 1/4	7/8
RL6E066	2	43 5/8	33 1/4	7/8

KE2/MT WIRING DIAGRAM FOR 120V FAN MOTORS



GENERAL NOTES

# 1	DELETED SYSTEM 'A3', REVISED 'A1,' SYSTEM 'A' COMPRESSOR & MCA.	10.23.19
# 2	UPDATED W/1 EVAP MODEL NUMBERS	6.3.22

REV	DESCRIPTION	DATE
-----	-------------	------



Ph: (661) 505-7913

Project Name and Address
REFRIGERATION PLAN

JARANA RESTAURANT
AVENTURA, FL

NOT DRAWN TO SCALE

DRAWING NUMBER 19-1085	JOB NUMBER
DATE 10-23-2019	SHEET NUMBER R-1
DRAWN BY R.D.	